





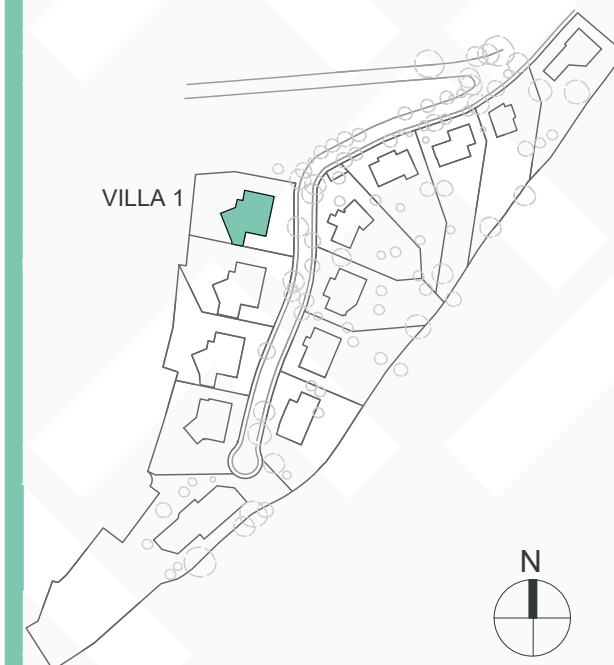
### Villa Olivo

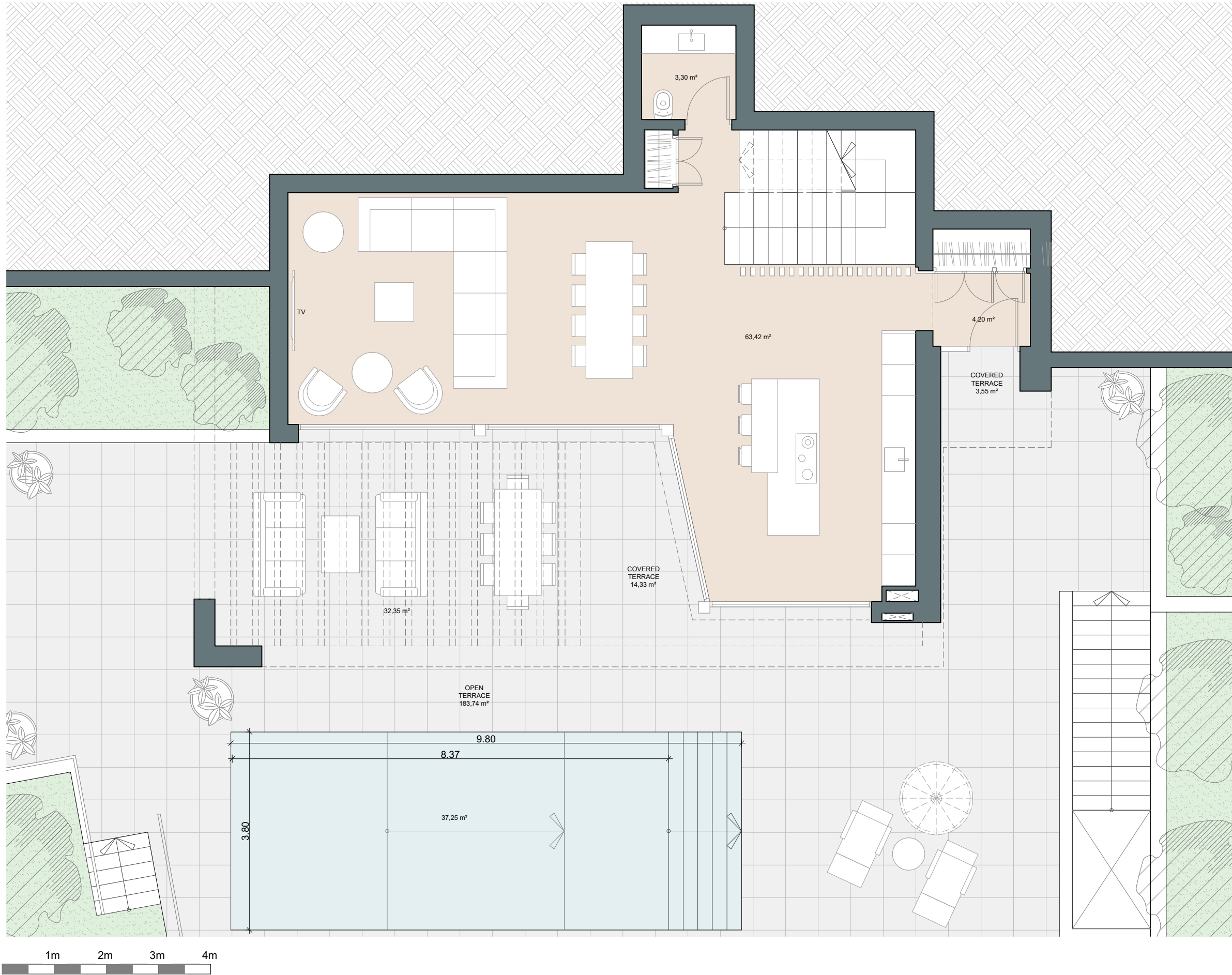
Built closed area	341 m <sup>2</sup>
Covered terrace	26 m <sup>2</sup>
Open terrace	218 m <sup>2</sup>
Open terrace pergola	31 m <sup>2</sup>
<b>Total terrace</b>	<b>275 m<sup>2</sup></b>
Pool 9,8 x 3,8m	37 m <sup>2</sup>
<b>Total built area</b>	<b>653 m<sup>2</sup></b>
<b>Plot area</b>	<b>914 m<sup>2</sup></b>

 4
  3
  341 m<sup>2</sup>
 3



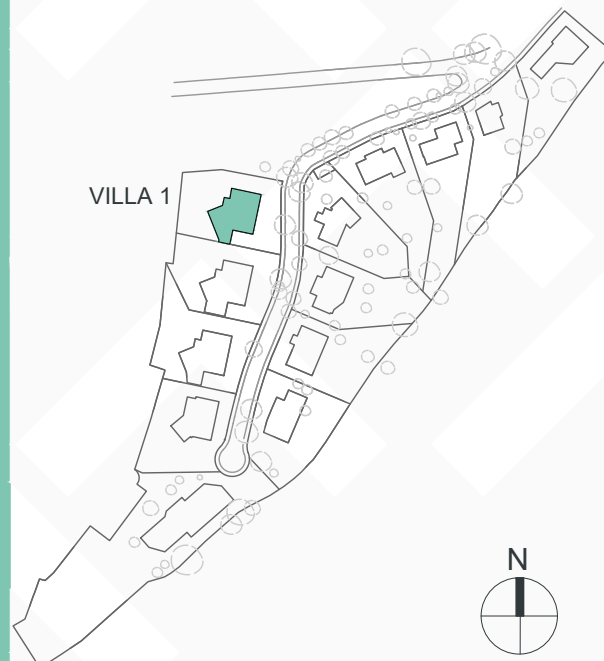
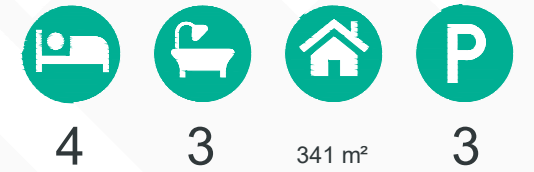
This document is for information only. The areas and measurements are approximate and may be modified for technical reasons and/or administrative issues. The room areas marked on the drawing are usable space.

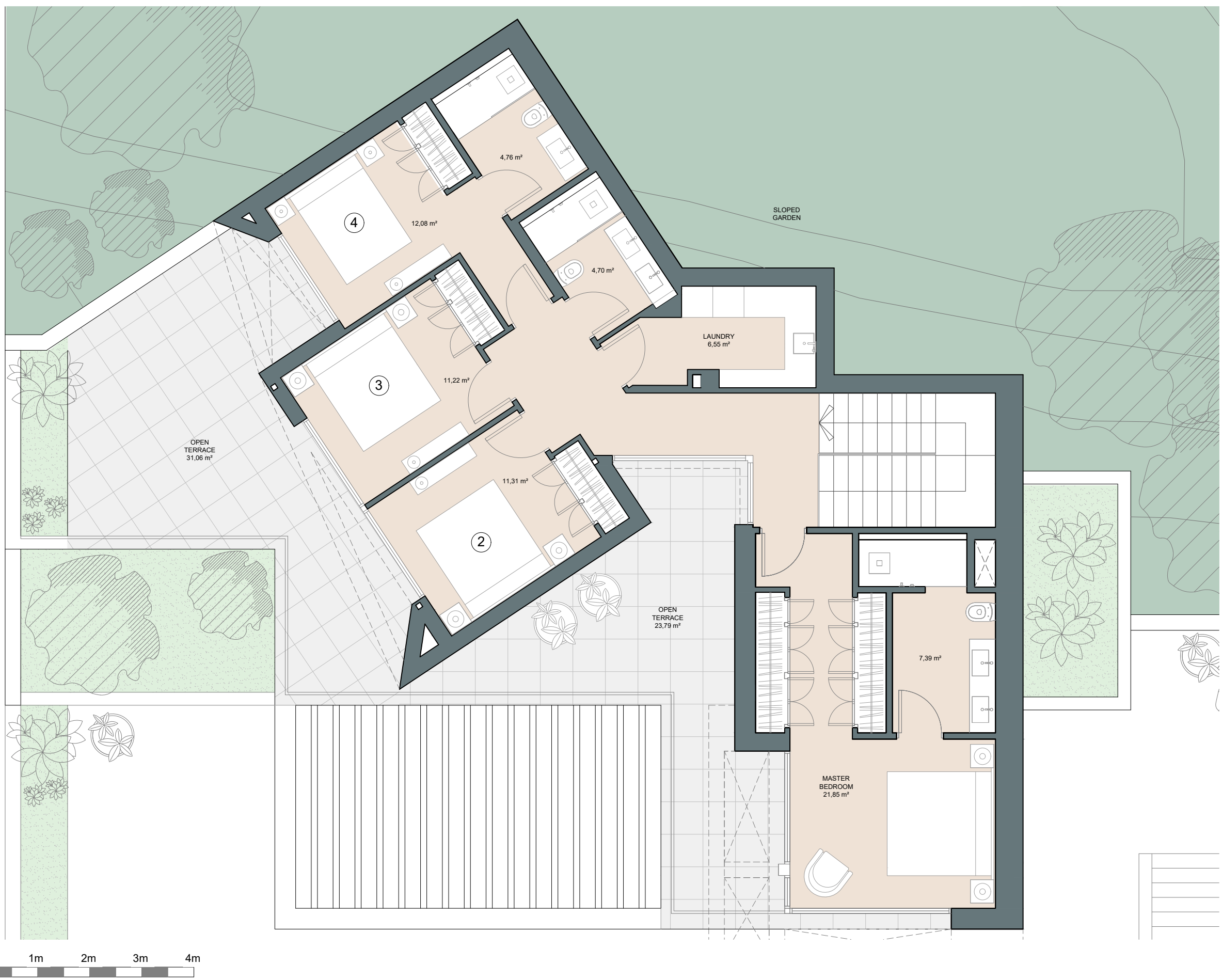




## Villa Olivo





Built closed area	341 m <sup>2</sup>
Covered terrace	26 m <sup>2</sup>
Open terrace	218 m <sup>2</sup>
Open terrace pergola	31 m <sup>2</sup>
<b>Total terrace</b>	<b>275 m<sup>2</sup></b>
Pool 9,8 x 3,8m	37 m <sup>2</sup>
<b>Total built area</b>	<b>653 m<sup>2</sup></b>
<b>Plot area</b>	<b>914 m<sup>2</sup></b>

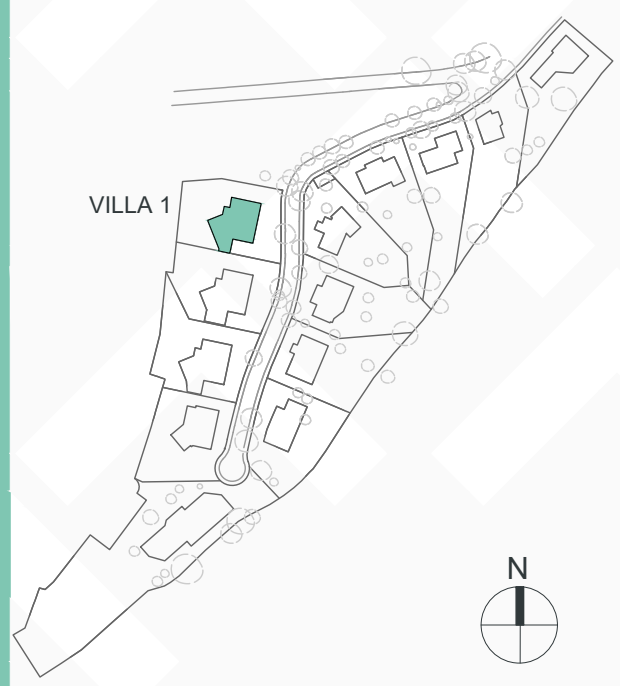




### Villa Olivo

Built closed area	341 m <sup>2</sup>
Covered terrace	26 m <sup>2</sup>
Open terrace	218 m <sup>2</sup>
Open terrace pergola	31 m <sup>2</sup>
<b>Total terrace</b>	<b>275 m<sup>2</sup></b>
Pool 9,8 x 3,8m	37 m <sup>2</sup>
<b>Total built area</b>	<b>653 m<sup>2</sup></b>
<b>Plot area</b>	<b>914 m<sup>2</sup></b>

 4    
  3    
  341 m<sup>2</sup>    
  3



This document is for information only. The areas and measurements are approximate and may be modified for technical reasons and/or administrative issues. The room areas marked on the drawing are usable space.