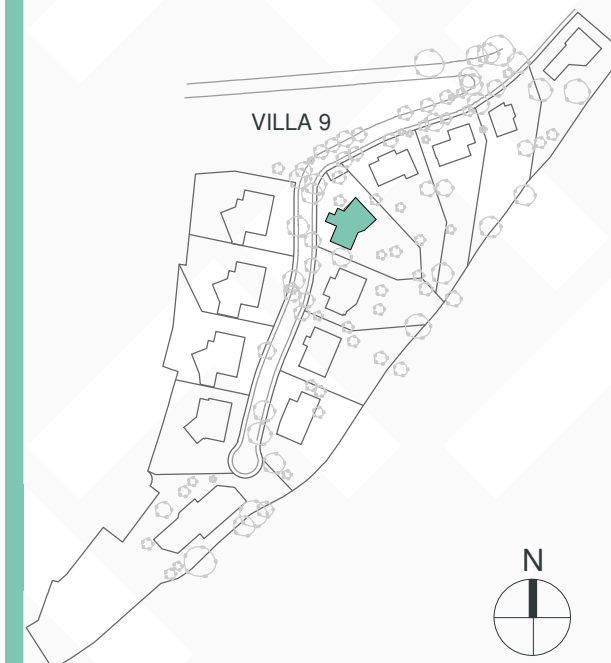
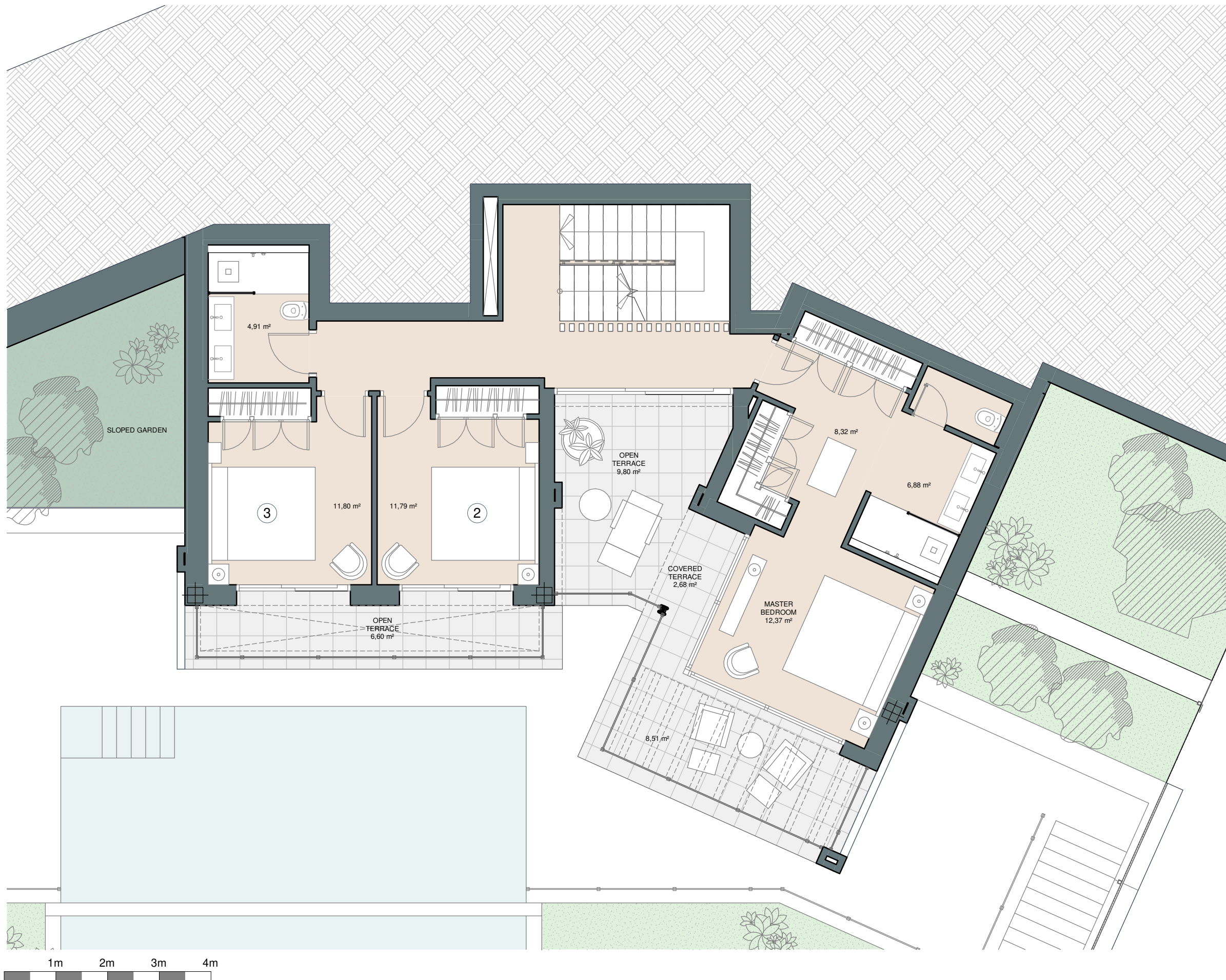


### Villa Almendro

Built closed area	329 m <sup>2</sup>
Covered terrace	29 m <sup>2</sup>
Open terrace	81 m <sup>2</sup>
Open terrace pergola	11 m <sup>2</sup>
<b>Total terrace</b>	<b>121 m<sup>2</sup></b>
Pool 9 x 3,8m	34 m <sup>2</sup>
<b>Total built area</b>	<b>484 m<sup>2</sup></b>
<b>Plot area</b>	<b>915 m<sup>2</sup></b>





4 3 329 m<sup>2</sup> 3

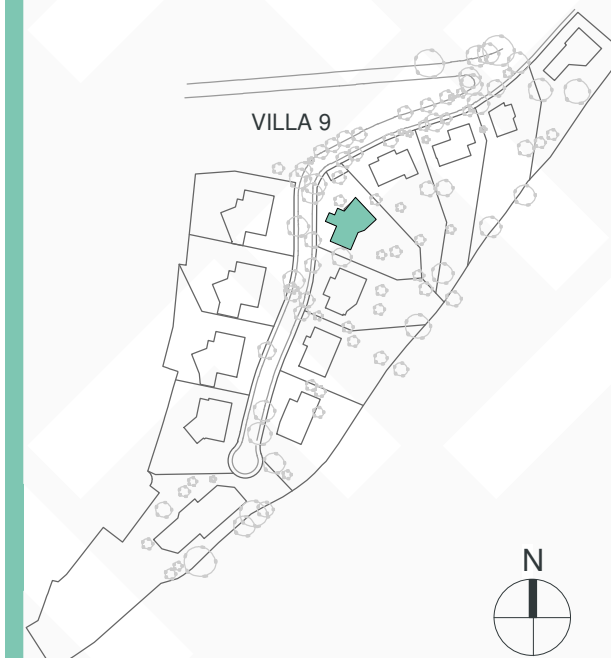


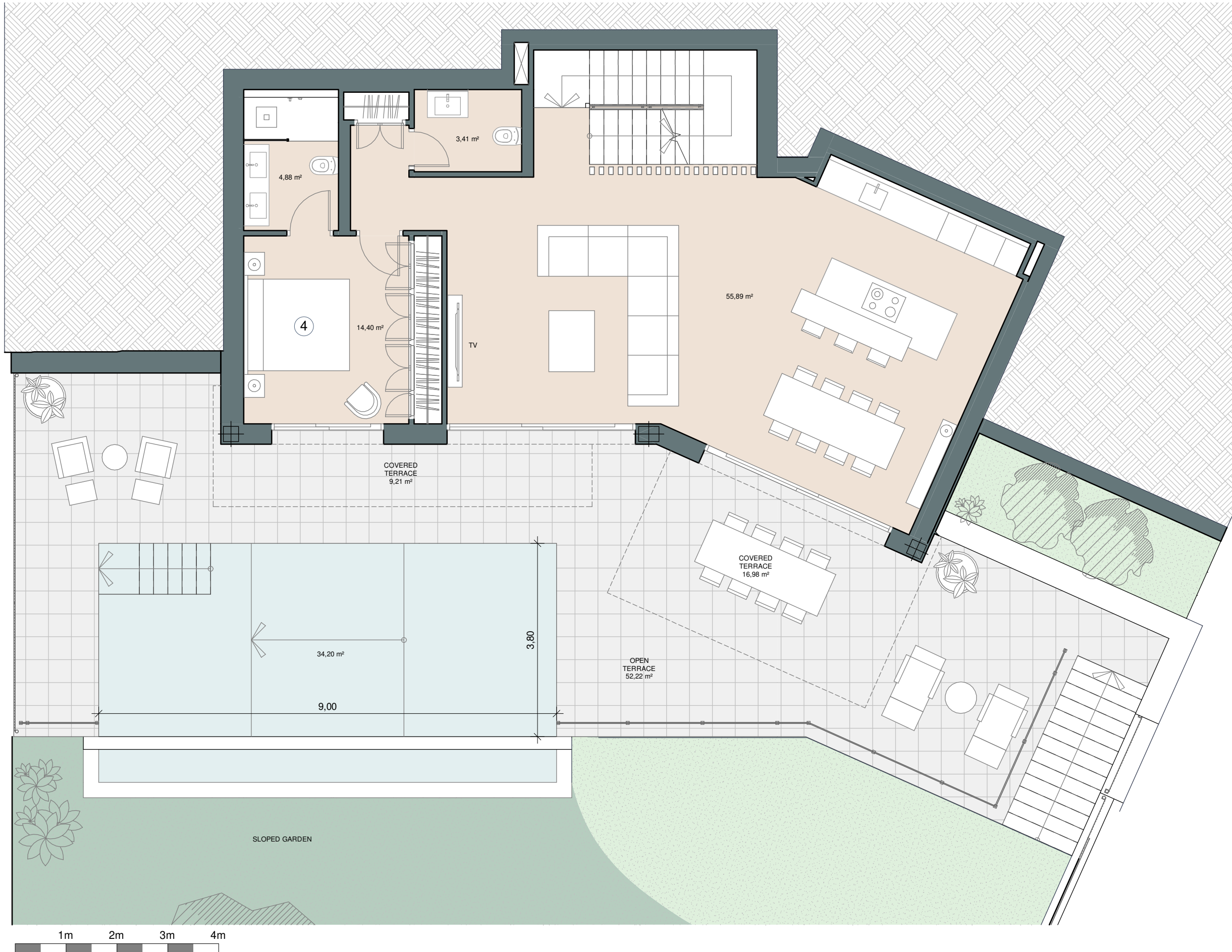


### Villa 9

Built closed area	329 m <sup>2</sup>
Covered terrace	29 m <sup>2</sup>
Open terrace	81 m <sup>2</sup>
Open terrace pergola	11 m <sup>2</sup>
<b>Total terrace</b>	<b>121 m<sup>2</sup></b>
Pool 9 x 3,8m	34 m <sup>2</sup>
<b>Total built area</b>	<b>484 m<sup>2</sup></b>
<b>Plot area</b>	<b>915 m<sup>2</sup></b>





 4   
  3   
  329 m<sup>2</sup>   
  3

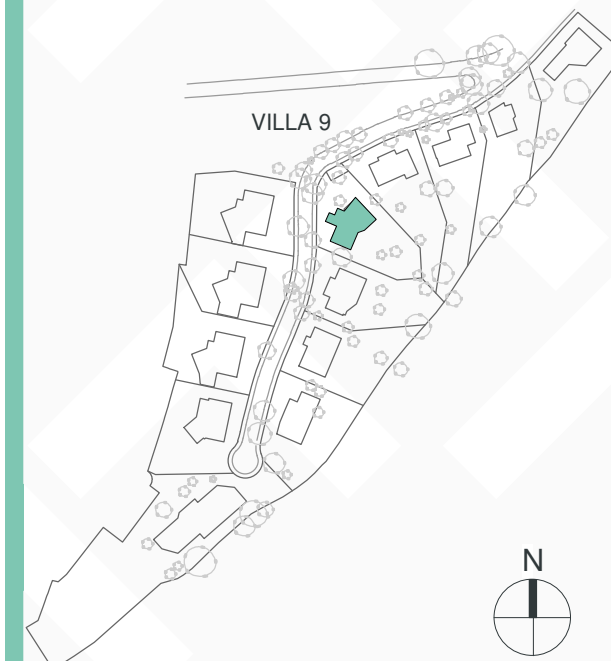


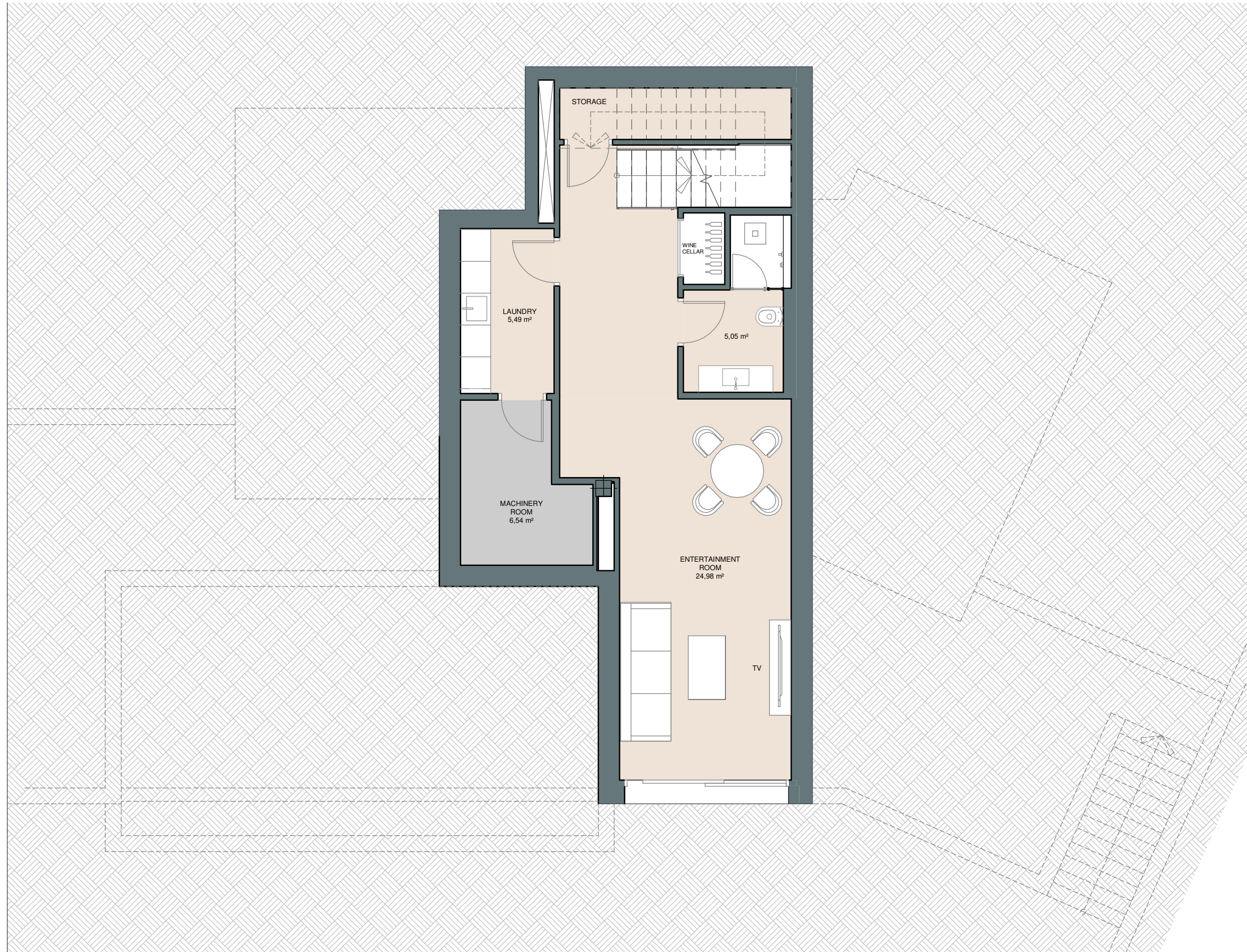


## Villa Almendro

Built closed area	329 m <sup>2</sup>
Covered terrace	29 m <sup>2</sup>
Open terrace	81 m <sup>2</sup>
Open terrace pergola	11 m <sup>2</sup>
<b>Total terrace</b>	<b>121 m<sup>2</sup></b>
Pool 9 x 3,8m	34 m <sup>2</sup>
<b>Total built area</b>	<b>484 m<sup>2</sup></b>
<b>Plot area</b>	<b>915 m<sup>2</sup></b>





 4
  3
  329 m<sup>2</sup>
 3

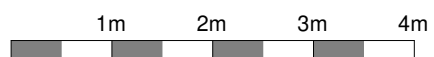




### Villa Almendro

Built closed area	329 m <sup>2</sup>
Covered terrace	29 m <sup>2</sup>
Open terrace	81 m <sup>2</sup>
Open terrace pergola	11 m <sup>2</sup>
<b>Total terrace</b>	<b>121 m<sup>2</sup></b>
Pool 9 x 3,8m	34 m <sup>2</sup>
<b>Total built area</b>	<b>484 m<sup>2</sup></b>
<b>Plot area</b>	<b>915 m<sup>2</sup></b>

 4
  3
  329 m<sup>2</sup>
 3



This document is for information only. The areas and measurements are approximate and may be modified for technical reasons and/or administrative issues. The room areas marked on the drawing are usable space.

